

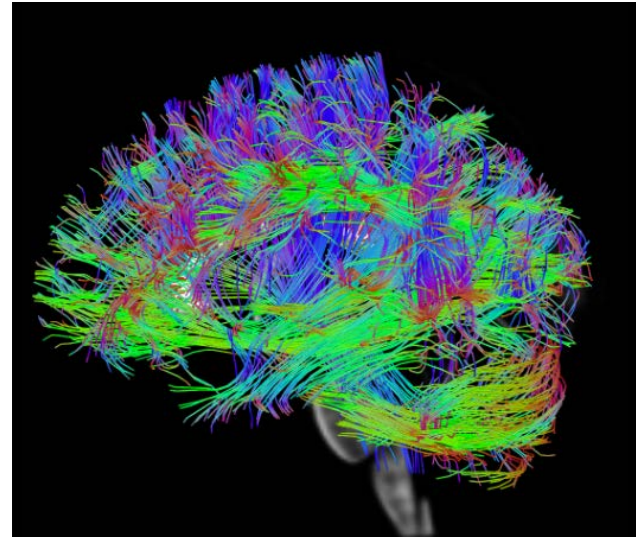


# Do you have a History of Head Injury?

V.  
5/8/2020

This study will be comparing brain scans of study participants with seizures to participants with traumatic brain injury (TBI) who do not have seizures.

The researchers, at the Providence VAMC, aim to identify the effects of a cognitive behavioral therapy for seizures by analyzing brain scans (MRI) collected before and after completion of the therapy sessions.



## The study involves:

- 1) Screening for eligibility and completion of questionnaires.
- 2) Two brain MRI scans about 13 weeks apart.
- 3) Follow-up questionnaires at 8 and 12 months after the first brain MRI scan.

—Participants will be compensated for their time and effort—

If you are interested or would like further information, please  
call: Krista Tocco, Project Coordinator  
**(401) 273-7100 ext. 16229**